

Kingspan Insulation Ltd

Pembridge
Leominster
Herefordshire HR6 9LA
Tel: 0870 850 8555 Fax: 0870 850 8666
e-mail: info@insulation.kingspan.com
website: www.insulation.kingspan.com



Agrément Certificate
91/2648
Product Sheet 1

THERMABATE CAVITY CLOSERS

THERMABATE PVC-U CAVITY CLOSERS

PRODUCT SCOPE AND SUMMARY OF CERTIFICATE

This Certificate relates to Thermabate PVC-U Cavity Closers for use as a cavity closer and to form an opening in masonry cavity walls.

AGRÉMENT CERTIFICATION INCLUDES:

- factors relating to compliance with Building Regulations where applicable
- factors relating to additional non-regulatory information where applicable
- independently verified technical specification
- assessment criteria and technical investigations
- design considerations
- installation guidance
- regular surveillance of production
- formal three-yearly review.

KEY FACTORS ASSESSED

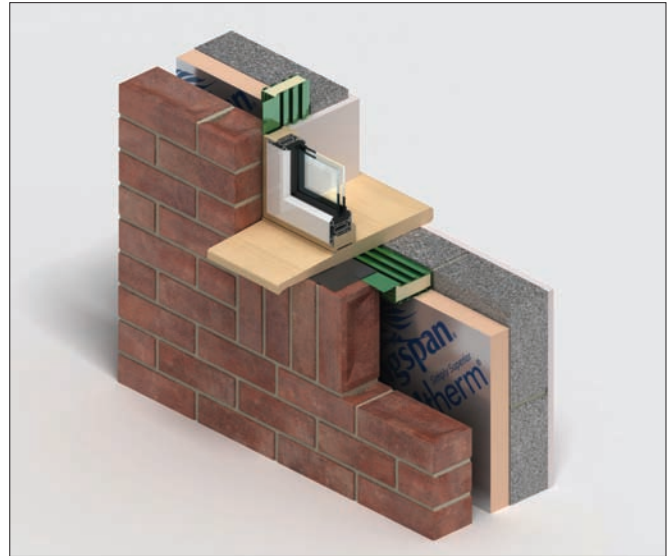
Hygrothermal behaviour — the products can be used in Accredited Construction Details (version 1.0) for jambs and sills which require a path of minimum thermal resistance through the closer of $0.45 \text{ Wm}^{-2}\text{K}^{-1}$ (see section 5).

Weather resistance — the products are effective as a damp-proof barrier and when used in a suitable wall construction will resist the passage of water into the interior of the building in flush and check reveal installations (see section 6).

Structural stability — in terms of wind loading resistance the products can be used in all areas of the UK. The products must not be used to support loads from the masonry (see section 7).

Properties in relation to fire — the installed products will not contribute significantly to the growth of a fire. The products do not constitute a cavity barrier (see section 8).

Durability — the products, when protected within the cavity, will last the normal expected life of a building (see section 10).



The BBA has awarded this Agrément Certificate to the company named above for the products described herein. These products have been assessed by the BBA as being fit for their intended use provided they are installed, used and maintained as set out in this Certificate.

On behalf of the British Board of Agrément

Chris Hunt
Head of Approvals — Physics

Greg Cooper
Chief Executive

Date of First issue: 24 February 2009

Originally certificated on 16 May 1991

The BBA is a UKAS accredited certification body — Number 113. The schedule of the current scope of accreditation for product certification is available in pdf format via the UKAS link on the BBA website at www.bbacerts.co.uk

Readers are advised to check the validity and latest issue number of this Agrément Certificate by either referring to the BBA website or contacting the BBA direct.

British Board of Agrément
Bucknalls Lane
Garston, Watford
Herts WD25 9BA

©2009

tel: 01923 665300
fax: 01923 665301
e-mail: mail@bba.star.co.uk
website: www.bbacerts.co.uk

In the opinion of the BBA, Thermabate PVC-U Cavity Closers, if used in accordance with the provisions of this Certificate, will meet or contribute to meeting the relevant requirements of the following Building Regulations:



The Building Regulations 2000 (as amended) (England and Wales)

Requirement:	C2(b)	Resistance to moisture
Comment:		The products prevent the passage of moisture from the outer leaf to the inner leaf of a cavity wall at window or door openings. See sections 6.1 to 6.3 of this Certificate.
Requirement:	C2(c)	Resistance to moisture
Comment:		The products can contribute to minimising the risk of condensation. See sections 5.2 and 5.3 of this Certificate.
Requirement:	L1(a)(i)	Conservation of fuel and power
Comment:		The products can contribute to minimising heat loss at jambs and sills. See sections 5.1 to 5.3 of this Certificate.
Requirement:	Regulation 7	Materials and workmanship
Comment:		The products are acceptable. See section 10 and the <i>Installation</i> part of this Certificate.

In addition to the contribution which the product can make to meeting the relevant requirements, the following comments should be noted:

Requirement:	A1	Loading
Comment:		When used in conventional masonry cavity walls, the products will not adversely affect the structural stability of the walls. Use of the product does not obviate the need for conventional wall ties between the inner and outer leaves at window and door openings. See sections 7.1 and 7.2 of this Certificate.
Requirement:	B3(4)	Internal fire spread (structure)
Comment:		The products can be used in constructions that meet this Requirement. See sections 8.1 to 8.3 of this Certificate.



The Building (Scotland) Regulations 2004 (as amended)

Regulation:	8(1)(2)	Fitness and durability of materials and workmanship
Comment:		The products can contribute to a construction satisfying this Regulation. See sections 9 and 10 and the <i>Installation</i> part of this Certificate.
Regulation:	9	Building standards – construction
Standard:	3.10	Precipitation
Comment:		Walls incorporating the products can satisfy this Standard, with reference to clauses 3.10.1 ⁽¹⁾⁽²⁾ and 3.10.3 ⁽¹⁾⁽²⁾ . See sections 6.1 to 6.3 of this Certificate.
Standard:	3.15	Condensation
Comment:		The products can contribute to minimising the risk of condensation, with reference to clauses 3.15.1 ⁽¹⁾ , 3.15.4 ⁽¹⁾ and 3.15.5 ⁽¹⁾ . See sections 5.2 and 5.3 of this Certificate.
Standard:	6.1(b)	Carbon dioxide emissions
Standard:	6.2	Building insulation envelope
Comment:		The products can contribute to minimising heat loss at jambs and sill, with reference to clauses 6.2.3 ⁽¹⁾ , 6.2.4 ⁽¹⁾⁽²⁾ and 6.2.5 ⁽²⁾ . See section 5.1 of this Certificate.
Regulation:	12	Building standards – conversions
Comment:		All comments given for the products under Regulation 9, also apply to this Regulation, with reference to clause 0.12.1 ⁽¹⁾⁽²⁾ and Schedule 6 ⁽¹⁾⁽²⁾ .

In addition to the contribution which the products can make to satisfying the relevant Standards, the following comments should be noted:

Regulation:	9	Building standards – construction
Standard:	1.1(a)(b)	Structure
Comment:		When used in conventional masonry cavity walls the products will not obviate the need for conventional wall ties between the inner and outer leaves at window and door openings, with reference to clause 1.1.1 ⁽¹⁾⁽²⁾ . Door frames require additional fixings. See sections 7.1 and 7.2 of this Certificate.
Standard:	2.4	Cavities
Comment:		In conjunction with a cavity barrier, the products can satisfy this Standard, with reference to clause 2.4.1 ⁽¹⁾⁽²⁾ and Annex 2.B ⁽¹⁾ or 2.D ⁽²⁾ . See sections 8.1 to 8.3 of this Certificate.

(1) Technical Handbook (Domestic).
(2) Technical Handbook (Non-Domestic).



The Building Regulations (Northern Ireland) 2000 (as amended)

Regulation:	B2	Fitness of materials and workmanship
Comment:		The products are acceptable. See section 10 and the <i>Installation</i> part of this Certificate.
Regulation:	B3(2)	Suitability of certain materials
Comment:		The products are acceptable. See section 9 of this Certificate.

Regulation:	C4(b)	Resistance to ground moisture and weather
Comment:		Walls incorporating the products can contribute to meeting this Regulation. The sub-frame can be used where checked reveals are required. See sections 6.1 to 6.3 of this Certificate.
Regulation:	C5	Condensation
Comment:		The products can contribute to satisfying this Regulation. See section 5.3 of this Certificate.
Regulation:	F2(a)(i)	Conservation measures
Regulation:	F3(2)	Target carbon dioxide Emissions Rate
Comment:		The products can contribute to minimising heat loss at jambs and sills. See section 5.1 of this Certificate.
In addition to the contribution which the products can make to meeting the relevant Requirements, the following comments should be noted:		
Regulation:	D1	Stability
Comment:		When used in conventional masonry cavity walls, the products will not obviate the need for conventional wall ties between the inner and outer leaves at around window and door openings. Door frames require additional fixings. See sections 7.1 and 7.2 of this Certificate.
Regulation:	E4(4)	Internal fire spread — Structure
Comment:		The products do not constitute a cavity barrier. See sections 8.1 to 8.3 of this Certificate.

Construction (Design and Management) Regulations 2007

Construction (Design and Management) Regulations (Northern Ireland) 2007

In the opinion of the BBA there is no information in this Certificate which relates to the obligations of the client, CDM co-ordinator, designer and contractors under these Regulations.

Non-regulatory Information

NHBC Standards 2008

NHBC accepts the use of Thermabate PVC-U Cavity Closers, when installed and used in accordance with this Certificate, in relation to *NHBC Standards*, Chapter 6.1 *External masonry walls*.

Zurich Building Guarantee Technical Manual 2007

Zurich accepts the use of Thermabate PVC-U Cavity Closers, when installed and used in accordance with this Certificate, in relation to the *Zurich Building Guarantee Technical Manual*, Section 4 *Superstructure*, Sub-section *External walls — thermal insulation*.

General

This Certificate relates to Thermabate PVC-U Cavity Closers for use in masonry walls with cavity widths 50 mm, 65 mm, 75 mm, 85 mm, 90 mm, 100 mm or multiples of these widths up to 200 mm.

The products close the cavity at window and door openings without forming a thermal bridge, provides a damp-proof barrier between inner and outer wall leaves at the point of closure, and can be used to establish the cavity width and to form an opening. It can be used in check reveal installations.

The products are suitable for use with timber, PVC-U, aluminium or steel window and door frames.

The products are non-loadbearing and window and door frames must be fixed independently to the masonry. Proprietary frame fixings, which may be recommended by the manufacturer, are outside the scope of this Certificate.

It is important that the designers, planners, contractors and/or installers ensure that the products are installed and used in accordance with the Certificate holder's instructions and the information given in this Certificate.

Technical Specification

1 Description

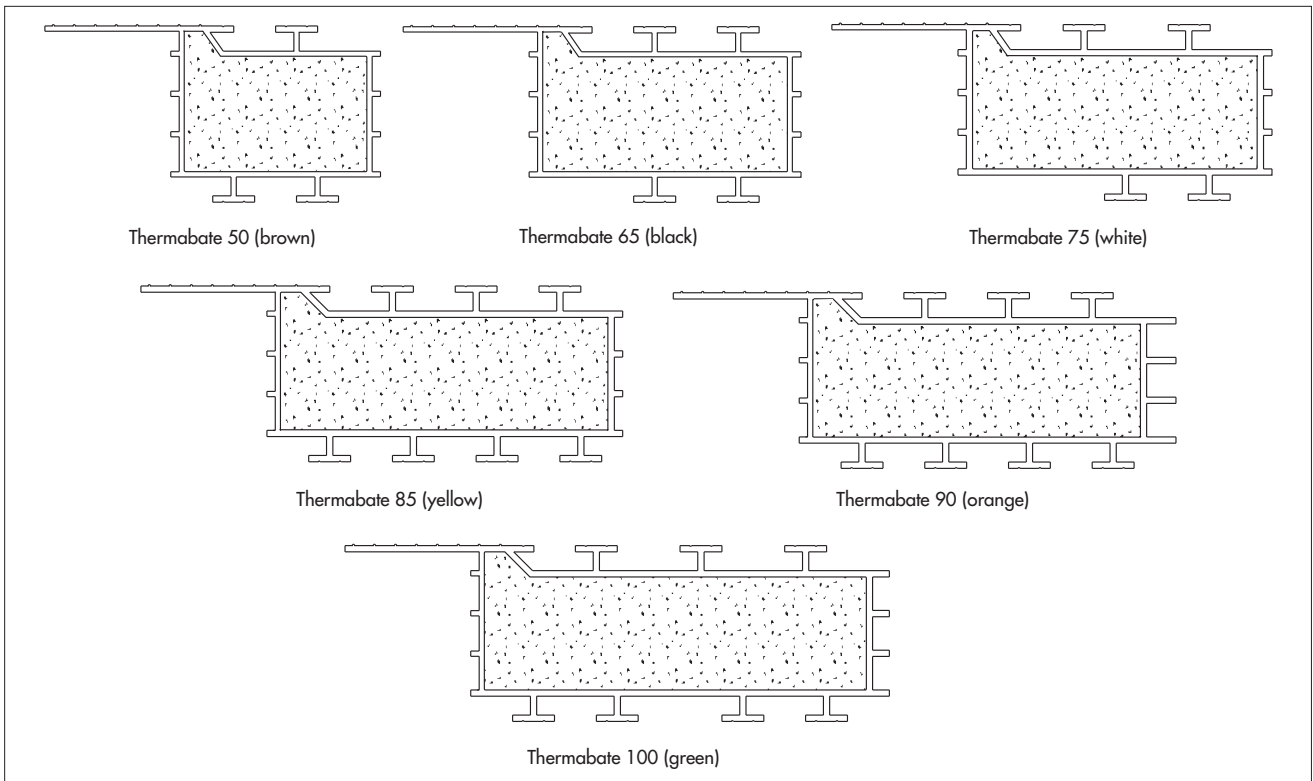
1.1 Thermabate PVC-U Cavity Closers (Thermabate 50⁽¹⁾, 65⁽¹⁾, 75, 85, 90 and 100) are manufactured in 3 metre lengths for use with corresponding nominal cavity widths of 50 mm, 65 mm, 75 mm, 85 mm, 90 mm and 100 mm. Wider cavities, up to 200 mm, can be accommodated by coupling closer sections together by means of a jointing clip (see section 1.4).

(1) These sizes have been covered by Agrément certification since 1984.

1.2 The cavity closer profiles are colour coded, hollow PVC-U extrusions filled with CFC- and HCFC-free zero ODP polyurethane foam (see Figure 1). They incorporate a ribbed fixing flange and three (Thermabate 50), four (Thermabate 65 and 75) or seven (Thermabate 85, 90 and 100) continuous projections (T-flanges) providing rigidity, a key for the plaster or floor screed, and a location for the ancillary clip components described in section 1.4.

1.3 Each cavity closer width is extruded in a different colour for identification purposes — 50 mm brown, 65 mm black, 75 mm white, 85 mm yellow, 90 mm orange and 100 mm green. A contract range is available in blue, which covers all sizes.

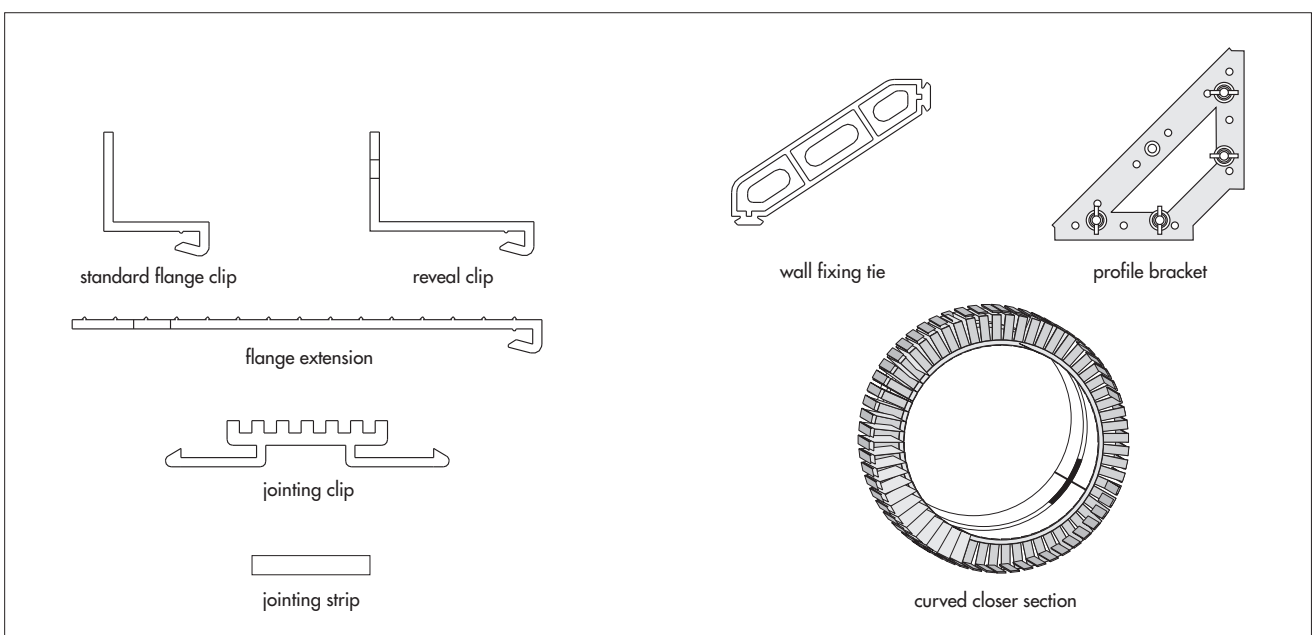
Figure 1 Cross-sections



1.4 A number of ancillary components are available for use with the closer. These are shown in Figure 2 and described below:

- standard flange clip — for use as a weathercheck, for fixing closer profiles to window frame and for retaining partial fill insulation butts in the cavity
- reveal clip — For use at a checked reveal
- flange extension clip — To improve fixture of closer to masonry by extending over existing fixing flange or adding an additional fixing onto the other leaf
- jointing clip — For coupling closer profiles to cover cavity widths up to 200 mm
- jointing strip — For aligning sections in butt joint
- aluminium adhesive tape — As protection around box section at butt joint
- wall fixing tie — For fixing closer profile into mortar course as wall is built
- profile brackets — For building a profile frame around which the wall can be built for the window or door to be installed later.

Figure 2 Ancillary items



1.5 The cavity closers and flange clip/strip profiles are manufactured by normal PVC-U extrusion techniques. As part of the continuous process holes are punched along the fixing flange at 150 mm centres and the profiles are cut to standard 3 m lengths. The wall fixing tie and profile brackets are manufactured by conventional injection moulding procedures, the former from PVC-U and the latter from polypropylene.

1.6 The insulating foam core is produced by injecting the two base chemicals into the hollow box section of the closer profile and then cropping the polyurethane foam which emerges at either end.

1.7 The standard closer lengths may also be transformed into circular sections for closing the cavity around circular windows. To achieve this, cuts are made in the insulated box at approximately 20 mm centres leaving the front face of the profile untouched. Hot air is then blown onto the front face of the profile and the closer bent to shape around a former. A jointing strip is inserted between the T-flanges of the cut ends to close the circle. Self-adhesive aluminium tape is wrapped around the entire cut box section to seal the internal face of the closer.

1.8 Visual and dimensional quality control checks and heat reversion, impact and gelation tests are carried out on the extruded PVC-U profiles.

1.9 Quality control on the foam filling operation consists of weighing samples of the finished product and sectioning sample lengths of profile to ensure the absence of voids.

2 Delivery and site handling

2.1 The products are delivered secured with a wrapper bearing the supplier's name and the BBA identification mark incorporating the number of this Certificate. For the closer sections, packs include 10 lengths and are colour-coded to match the profile. For the other components, quantities vary dependent upon the particular item. Circular closers are individually packed to order.

2.2 Packs of extruded sections should be stored flat and supported along their length to prevent distortion. Circular closers should be stacked vertically, taking care to avoid damage in transit.

Assessment and Technical Investigations

The following is a summary of the assessment and technical investigations carried out on Thermabate PVC-U Cavity Closers.

Design Considerations

3 General

3.1 Thermabate PVC-U Cavity Closers are satisfactory for use, in conjunction with timber, PVC-U or metal window and door frames, to provide a cavity closer and a damp-proof barrier at the point of closure in brickwork or blockwork walls having a nominal cavity width of 50 mm, 65 mm, 75 mm, 85 mm, 90 mm, 100 mm, or multiples of these up to 200 mm.

3.2 The products provide an effective means of closing a cavity without creating a thermal bridge; a separate vertical damp-proof course is not required, nor is it necessary to cut bricks or blocks. It can be used to form a checked reveal where required and to fit the window after completion of the masonry, as is conventional practice in Scotland and Northern Ireland.

3.3 The products provide an adequate key for plaster or floor screed.

3.4 The products are non-loadbearing and should not be used to support window or door frames, nor in place of normal cavity wall ties. However, they can be used to aid establishment of the cavity widths during wall construction, and when fabricated into a closer frame by means of the profile brackets, to form an opening around which a wall can be built.


3.5 Where the products are used to support a floor screed at a door threshold, the screed must be sufficiently thick (65 mm minimum) or be reinforced to prevent cracking.

3.6 Removal of the window or door frame cannot be achieved without damaging the cavity closer and the associated plaster or floor screed unless the window has been fitted in a checked reveal. New lengths of the products can be installed with the new frame.

4 Practicability of installation

Installation of the products is straightforward and can be carried out by tradesmen using traditional skills.

5 Hygrothermal behaviour

 5.1 The products have a path of minimum thermal resistance through the closer of at least $0.45 \text{ m}^2\text{KW}^{-1}$ when used in jambs and sills with the window/door frame set-back 30 mm or more into the wall cavity. The products can therefore be used in accordance with the Accredited Construction Details (version 1.0) to limit loss and assign the default heat loss rates in Tables 3 of BRE Information Paper IP 1/06 *Assessing the effects of thermal bridging at junctions and around openings* in SAP and SBEM calculations.



5.2 Jamb and sills incorporating the products in accordance with section 5.1 will adequately limit the risk of local surface condensation.



5.3 Under normal domestic conditions, the level of interstitial condensation associated with the products will be low and the risk of any resultant damage minimal.

5.4 Door frames installed with proprietary fixings which cannot be set-back into the wall cavity by 30 mm may require additional thermal insulation, for example insulated dry lining, to minimise excessive heat loss and the risk of excessive surface condensation.

6 Weather resistance



6.1 The products are effective as a vertical damp-proof barrier at jambs of window and door openings in masonry constructions, where a brick/block closer and dpc detail would normally be used. The products are also effective as a horizontal damp-proof barrier at the sill or threshold.

6.2 When the products are used without the standard flange clip (eg when the closer is built in pre-fixed to frame — see section 12.20) it is suitable for use in exposure categories up to and including 'sheltered/moderate', as defined in Table 10 of BS 5628-3 : 2005 and depicted as exposure zones 1 to 2 in the map contained in section 3.1 of BRE Report BR 262 *Thermal insulation: avoiding risks* 1994. With the standard flange clip in place the products are suitable for use in exposure categories up to and including 'very severe' and exposure zones 1 to 4 of the above referenced documents.

6.3 The products may also be used to construct a checked reveal. In this construction, in which the frame is positioned in a rebate behind the outer leaf of the jamb, the products are suitable for use in exposure categories up to and including 'very severe' as defined in Table 10 of BS 5628-3 : 2005 which covers all exposure zones in the United Kingdom.

7 Structural stability

7.1 The products are non-loadbearing and must not be used to support loads from the masonry. Lintels are required above window and door openings.

7.2 The products will not have an adverse effect on the structural stability of brickwork or blockwork walls, constructed in the conventional manner in accordance with normal good practice as defined in BS 5628-1 : 2005 and BS 5628 3 : 2005. Use of the products does not obviate the need for conventional wall ties around the openings.

7.3 Door and window frames should be fixed to the masonry by conventional means in addition to any fixings to the closer.

8 Properties in relation to fire

8.1 The products will not contribute significantly to the growth of a fire.

8.2 The products do not constitute a cavity barrier against the penetration of smoke and flame in the context of the Building Regulations. This does not prevent its use in England and Wales where cavity barriers are not generally required around openings in masonry cavity wall construction. In Scotland and Northern Ireland, however, the products are only suitable for use in conjunction with a cavity barrier meeting the performance requirements defined in Mandatory Standard 2.4, clause 2.4.1⁽¹⁾⁽²⁾ and Annex 2.B⁽¹⁾ or Annex 2.D⁽²⁾ (Scotland) or Technical Booklet E : 2005, Paragraph 3.37 (Northern Ireland).

(1) Technical Handbook (Domestic).

(2) Technical Handbook (Non-Domestic).

8.3 The use of the products does not preclude the need to provide suitable fire protection to steel lintels where this is necessary to satisfy the Building Regulations.

9 Maintenance



To ensure the maximum weathertightness, the silicone seal between window or door frames and masonry must be checked regularly and repairs or renewal carried out promptly.

10 Durability



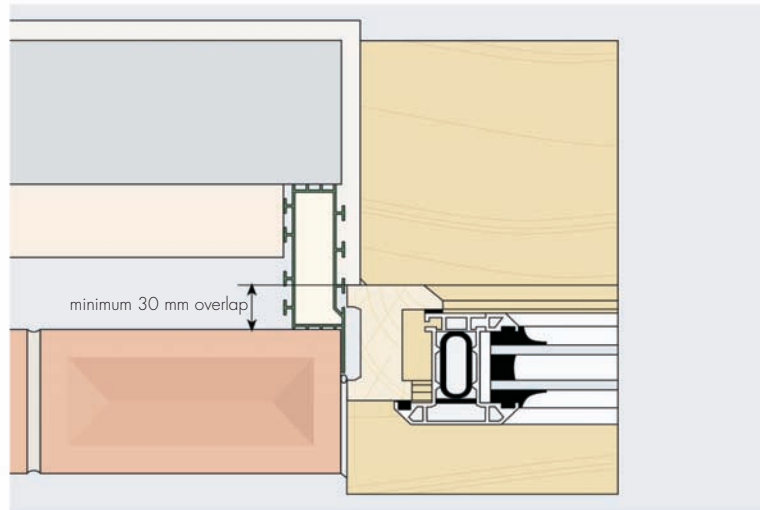
The products are durable and, when installed in accordance with this Certificate, will not suffer significant degradation when protected within the cavity. The product will last the normal expected life of a building.

11 General

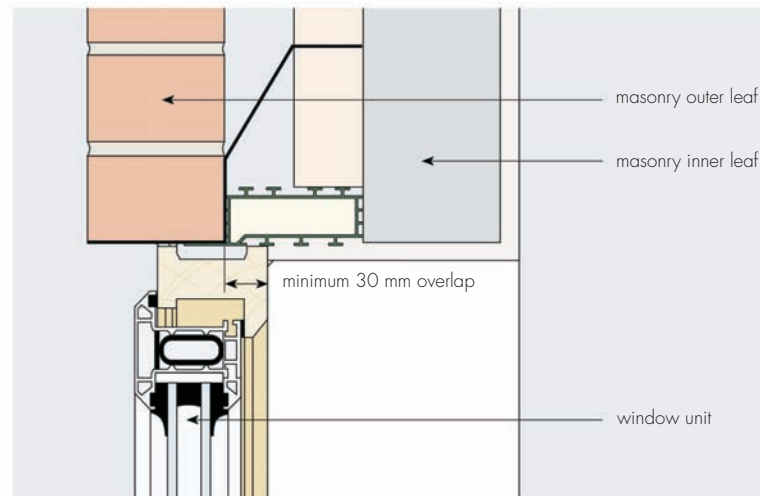
11.1 Installation of windows and doors using Thermabate PVC-U Cavity Closers must be carried out in accordance with the manufacturer's instructions.

11.2 Typical installation details are shown in Figure 3.

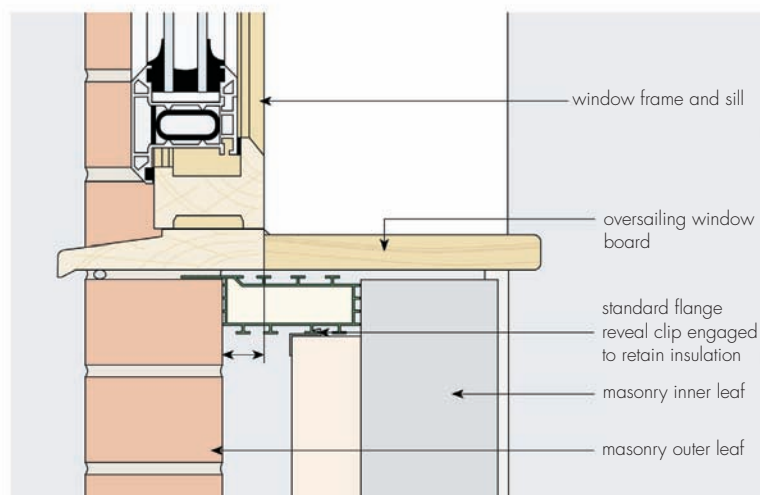
Figure 3 Typical installation details



jamb detail



head detail



sill detail

11.3 When installed in conjunction with the cavity closer, the back edge of the window/door frames should be set-back at least 30 mm⁽¹⁾ behind the inner face of the outer leaf to meet thermal requirements (see section 4.1) whilst ensuring that the front edge of the frame remains over the outer leaf.

(1) A smaller set-back may be possible if a satisfactory hygrothermal assessment using BRE Information Paper IP/O6, shows that thermal requirements are met.

11.4 The junctions between the wall and the front and back of the window/door frame must be effectively sealed.

12 Procedure

Closer built in to flush reveal using individual lengths

12.1 The lengths of closer section are cut to suit the size of opening. The sill (or threshold) section is cut to the width of sill opening, the jamb sections are cut to oversail the sill section by 50 mm and to butt up against the head section, which is cut to oversail the jamb section by 50 mm. The fixing flange of the jamb sections is cut away to allow it to sit in the cavity below sill level. The standard flange clip and flange extension, if used, are clipped into the closer sections at this stage.

12.2 Butt joints are permissible, but should be limited to one per side and to factory-cut, not site-sawn, ends. In addition, a small length of PVC-U jointing strip should be inserted between the T-flanges of the two sections, to keep them in line, and 100 mm wide aluminium adhesive tape wrapped around the box section at the join.

12.3 When the wall reaches sill level the sill closer section is sat in the cavity. Normally the fixing flange will sit on the outer leaf, but this can be reversed if the window is to be set back. If the width of the cavity does not match a closer width exactly (eg between 65 mm and 75 mm) the closer is positioned such that it spans the cavity and any 'gap' in the cavity up to 10 mm falls behind the fixing flange.

12.4 The jamb sections are propped in the vertical and butted up against the sill section, with the cut-away edge of the fixing flange sitting on the outer leaf at the sill. A dummy frame may be inserted on the sill at this stage to aid construction.

12.5 The wall is built around the jamb sections which are held in place in mortar from the brickwork or blockwork bed joints which is forced around the ribs at the sides of the insulated cavity closer. Optional wall fixing ties are available which can, if required, be clipped into the section and bedded into the mortar joints.

12.6 An appropriate lintel and damp-proof course is incorporated at the head. Where an insulated lintel is used a head closer section will not be required and the jamb sections will butt up against the lintel.

12.7 When the wall has been completed and the mortar set, the closer sections are fixed to the masonry through the holes provided at 150 mm centres in the fixing flange. The window (or door) frame will then be introduced into the opening and fixed to the masonry by conventional means. At this stage the standard flange clip will be fixed to the frame and any extension flange to the inner leaf.

12.8 To complete the installation a weatherproof sealant is incorporated over a back-up strip between the frame and external leaf and plaster or dry lining is applied at the internal reveal.

Use of closer with profile brackets

12.9 In this construction the closer sections are assembled into a frame around which the wall is built for the window or door frame to be installed later.

12.10 Section lengths are cut to size and flange clips inserted as described in section 12.1.

12.11 The wing nuts in the profile brackets are loosened and the brackets fitted over the T-flanges of abutting sections at the corners. The nuts are lightly tightened and the brackets adjusted to make sure that the correct dimensions are enclosed by the frame, after which the nuts are tightened firmly. To improve the rigidity of larger frames timber bracing may be fixed across the brackets using the pre-drilled holes in the brackets. For further support for patio doors it is recommended that additional brackets, with cross-bracing, are attached in the reverse position across the centre of the two jamb sections. Where a head closer section is not required (eg when an insulated lintel is used) a length of timber or section of Thermabate is used as a temporary prop on the fourth side of the frame.

12.12 The assembled frame is sat on the wall at the sill (or threshold) level and the wall built around it as described in sections 12.3, 12.5 and 12.6.

12.13 At a later stage when the wall has been completed, the brackets and bracing are removed for re-use and the installation completed as described in section 12.7.

Use of closer at checked reveal

12.14 In this construction the inner leaf is set in from the outer leaf at the jamb. This affords greater weather protection as the window or door frame can be set back behind the outer leaf, and is the preferred option in more exposed locations, particularly in Scotland and Northern Ireland.

12.15 In this detail the closer profile is used in 'reverse' so that the fixing flange sits over the inner leaf, and an optional reveal clip fits up against the outer leaf. The closer may be incorporated as individual lengths, or as a pre-assembled frame, as described previously. The window or door frame is then fixed back to the inner leaf using a conventional strap fixing.

Use of closer with replacement windows

12.16 Individual lengths of closer section can be installed after the wall has been built, which is of particular benefit for incorporation of replacement windows in refurbishment work.

12.17 The cavity is firstly cleared of return brick and any other blockage.

12.18 Closer sections are cut and inserted into the cavity as described previously. As wall fixing ties cannot be used in this detail it is essential that the fixing flange is firmly fixed to the masonry. An extension flange fixed to the other leaf can give additional support in this detail.

12.19 The replacement window or door frame is fixed to the masonry and the installation completed as described previously.

Closer built in with window or door frame

12.20 In this construction the closer sections are cut to size and fixed around the frame through the holes in the fixing flange, using 20 mm galvanized clout nails for timber frames and self-tapping screws for PVC/aluminium frames.

12.21 In this detail, with the closer already fixed to the frame, the use of the standard flange clip, to attach closer to frame, is not essential, nor are wall fixing ties or jointing strips to align sections at a butt joint.

12.22 The frame with attached closer is set on the walls at sill level, the wall built around it and the installation completed as described previously.

Use of circular closers

12.23 The circular closer is fixed to the window frame and built in following the general procedures outlined in sections 12.20, 12.21 and 12.22. The joint in the closer is placed at the bottom of the window. It is recommended that the circular closer be used under a suitable cavity tray which will shed water away from the closer, frame and inner leaf at this position.

Technical Investigations

13 Tests

Tests were carried out in accordance with MOAT No 8 : 1973 and MOAT No 17 : 1990 on PVC-U extrusions to determine:

- shrinkage on heating of PVC-U sections
- resistance of PVC-U sections to cracking in acetone.

14 Investigations

An assessment was made of:

- heat loss and condensation risk in accordance with the Accredited Construction Details (version 1.0) and the Accredited Construction Details (Scotland)
- the practicability of the installation
- weather resistance of the product when installed in accordance with the manufacturer's instructions
- properties in relation to fire and structural stability of walls incorporating the product
- durability of the components used in the construction of the product
- slamming and resistance to impact on doors
- the manufacture and quality control of the extruded profiles.

Bibliography

- BS 5628-1 : 2005 *Code of practice for the use of masonry — Structural use of unreinforced masonry*
BS 5628-3 : 2005 *Code of practice for the use of masonry — Materials and components, design and workmanship*
MOAT No 8 : 1973 *Directive for Rigid PVC Products Used Externally in Building*
MOAT No 17 : 1990 *UEAtc Technical Guide for the Agrément of windows in PVC-U*

15 Conditions

15.1 This Certificate:

- relates only to the product/system that is named and described on the front page
- is granted only to the company, firm or person named on the front page — no other company, firm or person may hold or claim any entitlement to this Certificate
- is valid only within the UK
- has to be read, considered and used as a whole document — it may be misleading and will be incomplete to be selective
- is copyright of the BBA
- is subject to English law.

15.2 Publications and documents referred to in this Certificate are those that the BBA deems to be relevant at the date of issue or re-issue of this Certificate and include any: Act of Parliament; Statutory Instrument; Directive; Regulation; British, European or International Standard; Code of Practice; manufacturers' instructions; or any other publication or document similar or related to the aforementioned.

15.3 This Certificate will remain valid for an unlimited period provided that the product/system and the manufacture and/or fabrication including all related and relevant processes thereof:

- are maintained at or above the levels which have been assessed and found to be satisfactory by the BBA
- continue to be checked as and when deemed appropriate by the BBA under arrangements that it will determine
- are reviewed by the BBA as and when it considers appropriate.

15.4 In granting this Certificate, the BBA is not responsible for:

- the presence or absence of any patent, intellectual property or similar rights subsisting in the product/system or any other product/system
- the right of the Certificate holder to manufacture, supply, install, maintain or market the product/system
- individual installations of the product/system, including the nature, design, methods and workmanship of or related to the installation
- the actual works in which the product/system is installed, used and maintained, including the nature, design, methods and workmanship of such works.

15.5 Any information relating to the manufacture, supply, installation, use and maintenance of this product/system which is contained or referred to in this Certificate is the minimum required to be met when the product/system is manufactured, supplied, installed, used and maintained. It does not purport in any way to restate the requirements of the Health & Safety at Work etc Act 1974, or of any other statutory, common law or other duty which may exist at the date of this Certificate; nor is conformity with such information to be taken as satisfying the requirements of the 1974 Act or of any statutory, common law or other duty of care. In granting this Certificate, the BBA does not accept responsibility to any person or body for any loss or damage, including personal injury, arising as a direct or indirect result of the manufacture, supply, installation, use and maintenance of this product/system.

