

Weber

Saint-Gobain Weber Ltd

Dickens House
Enterprise Way
Maulden Road
Flitwick
Bedfordshire MK45 5BY
Tel: 08703 330070 Fax: 01525 718988
e-mail: mail@netweber.co.uk
website: www.netweber.co.uk



Environmental Profile Certificate

10/EP1001

Product Sheet 2

WEBER MONOCOUCHE RENDERS

weber.pral M and weber.pral D

This Environmental Profile Certificate relates to Weber Monocouche Renders (weber.pral M and weber.pral D excluding Terracotta and Jaune Safran colours) manufactured at Weber Ballyclare, and Weber Telford.

Building Element Information

1 m² of external wall comprising: Weber Monocouche rendered medium-dense solid block wall (blocks laid flat), insulation, plaster, paint.

Building type ⁽¹⁾	Ecopoint score	Green Guide Rating ⁽¹⁾
All	0.53	A+

(1) As defined in the 2008 BRE Global Green Guide.

Environmental Profile — Cradle-to-Grave for the building element

This environmental profile relates to the above building element over a 60-year study period.

Embodied environmental impact	Characterised data per m ²		Ecopoint weighted value
	Unit	Value	
Global warming (GWP) ⁽¹⁾	kg CO ₂ eq	86	0.15
Depletion of the stratospheric ozone layer (ODP)	kg CFC-11 eq	0.00011	0.0048
Acidification of land and water sources (AP)	kg SO ₂ eq	0.82	0.00057
Eutrophication (EP)	kg (PO ₄) ⁻³ eq	0.067	0.0063
Photochemical ozone creation (PCOC)	kg ethane eq	0.083	0.00077
Water extraction ⁽²⁾	m ³	0.72	0.022
Raw materials extraction	tonne	0.34	0.14
Fossil fuel depletion	MJ	1278	0.015
Waste disposal	kg	58	0.12
Nuclear waste (higher level)	m ³ high level waste	0.000000065	0.023
Human toxicity to air and water	kg 1,4-DB eq	31	0.014
Ecotoxicity to fresh water	kg 1,4-DB eq	4.1	0.027
Ecotoxicity to land	kg 1,4-DB eq	0.12	0.0080

(1) Global warming can also be referred to as 'Embodied carbon' or 'Climate change'.

(2) Water extraction can also be referred to as 'Embodied water'.

The BBA (British Board of Agrément) has issued this Environmental Profile Certificate to the company named above for the system described herein.

On behalf of the BBA

Date of First issue: 5 May 2010

John Albon
Technical Manager

Greg Cooper
Chief Executive

Certificate amended on 20 May 2010 to refine terminology in Tables on pages 1 and 2.

The BBA is a UKAS accredited certification body — Number 113. The schedule of the current scope of accreditation for product certification is available in pdf format via the UKAS link on the BBA website at www.bbacerts.co.uk

Readers are advised to check the validity and latest issue number of this Agrément Certificate by either referring to the BBA website or contacting the BBA direct.

British Board of Agrément
Bucknalls Lane
Garston, Watford
Herts WD25 9BA

tel: 01923 665300
fax: 01923 665301
e-mail: mail@bba.star.co.uk
website: www.bbacerts.co.uk

©2010

Product Information

Environmental Profile — Cradle-to-Gate for the product

This environmental profile relates to Weber Monocouche Renders (weber.pral M and weber.pral D excluding Terracotta and Jaune Safran colours) only, when used at a rate of 25 kg of product per m².

Embodied environmental impact	Characterised data per m ²		Ecopoint weighted value
	Unit	Value	
Global warming (GWP) ⁽¹⁾	kg CO ₂ eq	5.50	0.010
Depletion of the stratospheric ozone layer (ODP)	kg CFC-11 eq	0.0000036	0.00015
Acidification of land and water sources (AP)	kg SO ₂ eq	0.026	0.000019
Eutrophication (EP)	kg (PO ₄) ⁻³ eq	0.0021	0.00019
Photochemical ozone creation (PCOC)	kg ethane eq	0.0045	0.000042
Water extraction ⁽²⁾	m ³	0.052	0.0016
Raw materials extraction	tonne	0.032	0.013
Fossil fuel depletion	MJ	66.24	0.00080
Waste disposal	kg	1.16	0.0024
Nuclear waste (higher level)	m ³ high level waste	0.0000000043	0.0015
Human toxicity to air and water	kg 1,4-DB eq	1.35	0.00059
Ecotoxicity to fresh water	kg 1,4-DB eq	0.25	0.0016
Ecotoxicity to land	kg 1,4-DB eq	0.010	0.00068
Ecopoint score (Product)			0.032

(1) Global warming can also be referred to as 'Embodied carbon' or 'Climate change'.

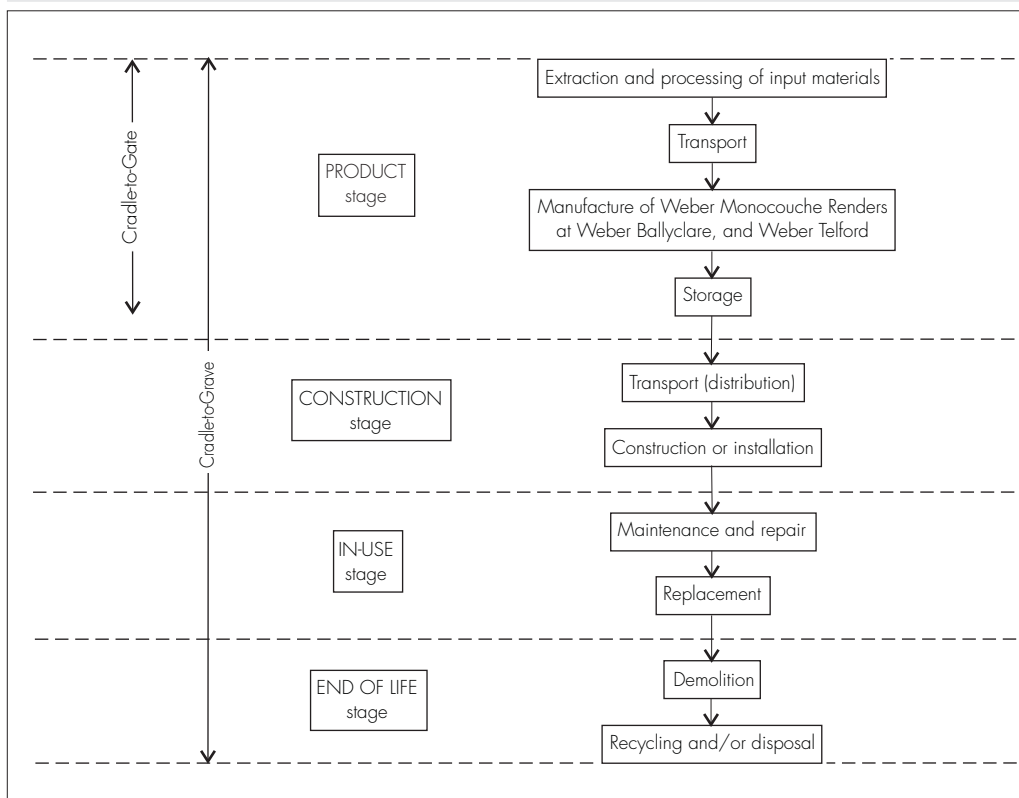
(2) Water extraction can also be referred to as 'Embodied water'.

Methodology

This environmental profile has been calculated using the BBA Environmental Profile Methodology, under licence using BRE Global Environmental Profiles Methodology (2008) and underpinning databases.

Boundaries

System boundaries and different stages of Environmental Profiles



Basis of the Calculations

Assumptions used as the basis of the calculations of this Certificate are:

Product range	weber.pral M: Azure Blue, Beige, Beige Ambre, Beige Clair, Bleu Clair, Bleu Doux, Bleu Rompu, Brick Red, Bridge Grey, Buff, Buttermilk, Cream, Dore Chaud, Earth, Granite Grey, Gris Mauve, Gris Perle, Ivory, Mauve Clair, Mauve Doux, Mauve Foncé, Ocre Rose, Orange Clair, Parchment, Rose Ambre, Rose Flamboyant, Rose Foncé, Rose Orange, Rose Rompu, Sand, Silver, Stone Grey, Terre Rouge, Vert Albâtre and White weber.pral D: Bathstone, Butter, Cream, Grey, Ivory, Limestone, Oyster, Silver and White
Site(s)	Weber Ballyclare, Co Antrim BT39 9EB and Weber Telford, Shropshire TF7 4LP
Functional unit	1 m ² of external wall construction, to satisfy current building regulations, and a U value of 0.3 W·m ⁻² ·K ⁻¹
Building element	Weber Monocouche rendered medium dense solid block wall (blocks laid flat), insulation, plaster, paint
Application rate	25 kg of product per m ²
Service life of product	50 years, as per the 2008 BRE Global Green Guide. This may differ from the durability quoted in a BBA Certificate for the product due to the different methodologies and parameters employed
Ecopoint score	Score for the overall environmental impact of a product within a building element based on the UK weighting system described in the 2008 BRE Global Green Guide and normalised to one Western European Citizen for one year.

Data Sources

Cradle-to-Gate	data has been calculated using Certificate holder's data and has been verified by the BBA.
Cradle-to-Grave	values have been modelled using a theoretical approach used for generic model for generic renders (BRE Global Green Guide 2008) including: <ul style="list-style-type: none">• Transport — Gate-to-Installation site — generic model for cementitious renders (Other building materials, BRE Global Green Guide 2008) for distribution within the UK (including transport from Northern Ireland to mainland UK)• Installation — plaster/render: rough cast render — dry dashed/wet dashed — 8.3% wastage model (BRE Global Green Guide 2008)• Maintenance — a maintenance model has not been used• End of life — generic end-of-life disposal route model for the percentage of material sent to each disposal route (landfill, incineration, recycling and reuse), for concrete from construction, demolition and refurbishment (BRE Global Green Guide 2008)• Service Life — BRE Global Green Guide 2008.

Other Information

BBA Certificate

weber.pral M has been awarded BBA Certificate 05/4268 (PDF can be viewed from: www.bbacerts.co.uk).

Environmental Management System (EMS)/ISO 14001

The environmental management systems for Weber Ballyclare, Co Antrim BT39 9EB, has been assessed and registered as meeting the requirements of BS EN ISO 14001 : 2004 by SGS under Certificate No GB96/8142.

The environmental management systems for Weber Telford, Shropshire TF7 4LP, has been assessed and registered as meeting the requirements of BS EN ISO 14001 : 2004 by BSI under Certificate No EMS510257.

Quality Management System (QMS)/ISO 9001

The quality management systems for Weber Ballyclare, Co Antrim BT39 9EB, has been assessed and registered as meeting the requirements of BS EN ISO 9001 : 2000 by NQA under Certificate No 559.

The quality management systems for Weber Telford, Shropshire TF7 4LP, has been assessed and registered as meeting the requirements of BS EN ISO 9001 : 2000 by BSI under Certificate No FM01209.

Conditions of Certification

Conditions

This Certificate:

- relates only to the product/system and manufacturing sites named and described on the front page
- is issued only to the company, firm, organisation or person named on the front page — no other company, firm, organisation or person may hold this Certificate or claim it has been issued to them
- is valid only within the UK
- has to be read, considered and used as a whole document — it may be misleading and will be incomplete to be selective
- is copyright of the BBA
- is subject to English Law.

Publications, documents, specifications and similar matter that are referred to herein, are those that were current at the date of issue or re-issue of this Certificate, except where deemed otherwise.

This Certificate and its continuance is determined by the BBA and, in general, it will remain valid for an unlimited period provided that the product/system and its manufacture and/or fabrication, including all related and relevant parts and processes thereof:

- are maintained at or above the levels which have been assessed and found to be satisfactory by the BBA
- continue to be checked as and when deemed appropriate by the BBA under arrangements that it will determine
- are reviewed by the BBA as and when it considers appropriate
- meet any requirements judged relevant by the BBA.

The BBA has used due skill, care and diligence in preparing this Certificate, but no warranty is given or implied.

In issuing this Certificate, the BBA is not responsible; and is excluded from any liability to any company, firm, organisation or person; for any matters arising directly or indirectly from:

- the presence or absence of any patent, intellectual property or similar rights subsisting in the product/system or any other product/system
- the right of the Certificate holder to manufacture, supply, install, maintain or market the product/system
- individual installations of the product/system, including their nature, design, methods, performance, workmanship and maintenance
- any works and constructions in which the product/system is installed, including their nature, design, methods, performance, workmanship and maintenance
- any loss or damage, including personal injury, howsoever caused by the product/system, including its manufacture, supply, installation, use, maintenance and removal.

This Certificate does not include any assessment of product quality, durability or performance.

Any information relating to the manufacture, supply, installation, use, maintenance and removal of this product/system which is contained or referred to in this Certificate, is the minimum required to be met when the product/system is manufactured, supplied, installed, used, maintained and removed. It does not purport in any way to restate the requirements of the Health & Safety at Work etc Act 1974, or of any other statutory, common law or other duty which may exist at the date of issue or reissue of this Certificate; nor is conformity with such information to be taken as satisfying the requirements of the 1974 Act or of any statutory, common law or other duty of care.