



SCHEME DOCUMENT FOR THE CERTIFICATE OF CONFORMITY FOR
SECURED BY DESIGN (SBD). PART OF POLICE CRIME PREVENTION INITIATIVES.

(18-01-014)



Note: This document may be revised from time to time, for example to take account of improvements and amendments to test and assessment methods and material innovations.

Readers are advised to contact the British Board of Agrément to check the latest edition via the following contact methods:

Tel: 01923 665300

e-mail: clientservices@bbacerts.co.uk

SCHEME DOCUMENT FOR THE CERTIFICATE OF CONFORMITY FOR SECURED BY DESIGN (SBD)

Terms and Conditions of Use

This Scheme Document is protected by copyright and the BBA owns such copyright.

Any Intellectual Property Rights in the content of this Scheme Document are owned by the BBA.

This Scheme Document has to be read, considered and used as a whole document – it may be misleading and will be incomplete to be selective.

You may view and read this Scheme Document, copy it to a local disk and print extracts for your own personal use and/or your internal business purposes. If a copy is being passed to a third party, BBA's Intellectual Rights must be acknowledged. Use and copying of this Scheme Document is permitted only in accordance with these terms and conditions.

References in this Scheme Document to any Act of Parliament, Statutory Instrument, Directive or Regulation, British, European or International Standard, Code of Practice, manufacturer's instructions or similar publications, are references to such publications in the form in which they were current at the date of this Scheme Document.

The BBA makes no warranties, representations or undertakings in respect of this Scheme Document.

In no event will the BBA be liable for any direct or consequential loss or damage arising from its use of, or reliance on, its content.

Contents

1 WELCOME TO THE SCHEME	4
2 HOW SECURED BY DESIGN WORKS	4
3 READY TO BEGIN?	4
4 APPLICATION FOR CERTIFICATE OF CONFORMITY FOR SECURED BY DESIGN (SBD)	4

1 WELCOME TO THE SCHEME

We are delighted that you have chosen to have your fenestration product certified for the Secured by Design initiative, demonstrating its ability to meet the requirements of PAS 24 and so contribute to satisfying Part Q of the Building Regulations 2010 (England and Wales) (as amended) and the Building Regulations Approved document is Standard 4.13 Security (Scotland).

The Secured by Design initiative is a police-owned scheme which promotes windows and doors that are designed in such a way as to ensure they are secure against theft and burglaries. This scheme focuses on crime prevention in homes and commercial premises and promotes the use of security standards for a wide range of applications and products.

By becoming a Secured by Design member, your products are more likely to be chosen by specifiers, and it will enhance your brand's reputation in the marketplace.

Fabricators who already hold a BBA Agrément Certificate can apply for Secured by Design registration using their BBA certificate, provided the system has an Enhanced Security Product Sheet (ES sheet) included within the scope of the Certificate.

2 HOW SECURED BY DESIGN WORKS

Within police forces there are Designing Out Crime Officers (DOCO) and staff who work closely with architects, developers and local authority planners on new-build developments and refurbishments to "design out crime", using the principles of Crime Prevention Through Environmental Design (CPTED) and physical security measures.

Secured by Design and certification bodies such as the BBA, working closely with manufacturers, focus on the provision of robust, quality products that can achieve the Police Preferred Specification award, which recognises that the Secured by Design standard has been met to help keep buildings secure.

Membership of Secured by Design requires certification from a United Kingdom Accreditation Service (UKAS) accredited, independent third-party certification body. This involves regular production audits and annual testing to ensure consistent quality over time and goes beyond the one-off testing required by the Building Regulations.

3 READY TO BEGIN?

There is an Application Form for you to complete. The completed form tells us what we initially need to know about your company and the product(s) that you would like us to assess for certification.

We will prepare a Certificate of Conformity contract based on the information provided. It is important that your requirements are fully and precisely defined within this document, as a failure to do so could result in errors or omissions in the contract.

The information you supply will be treated in confidence and will not be disclosed, other than as required under statute or by English law

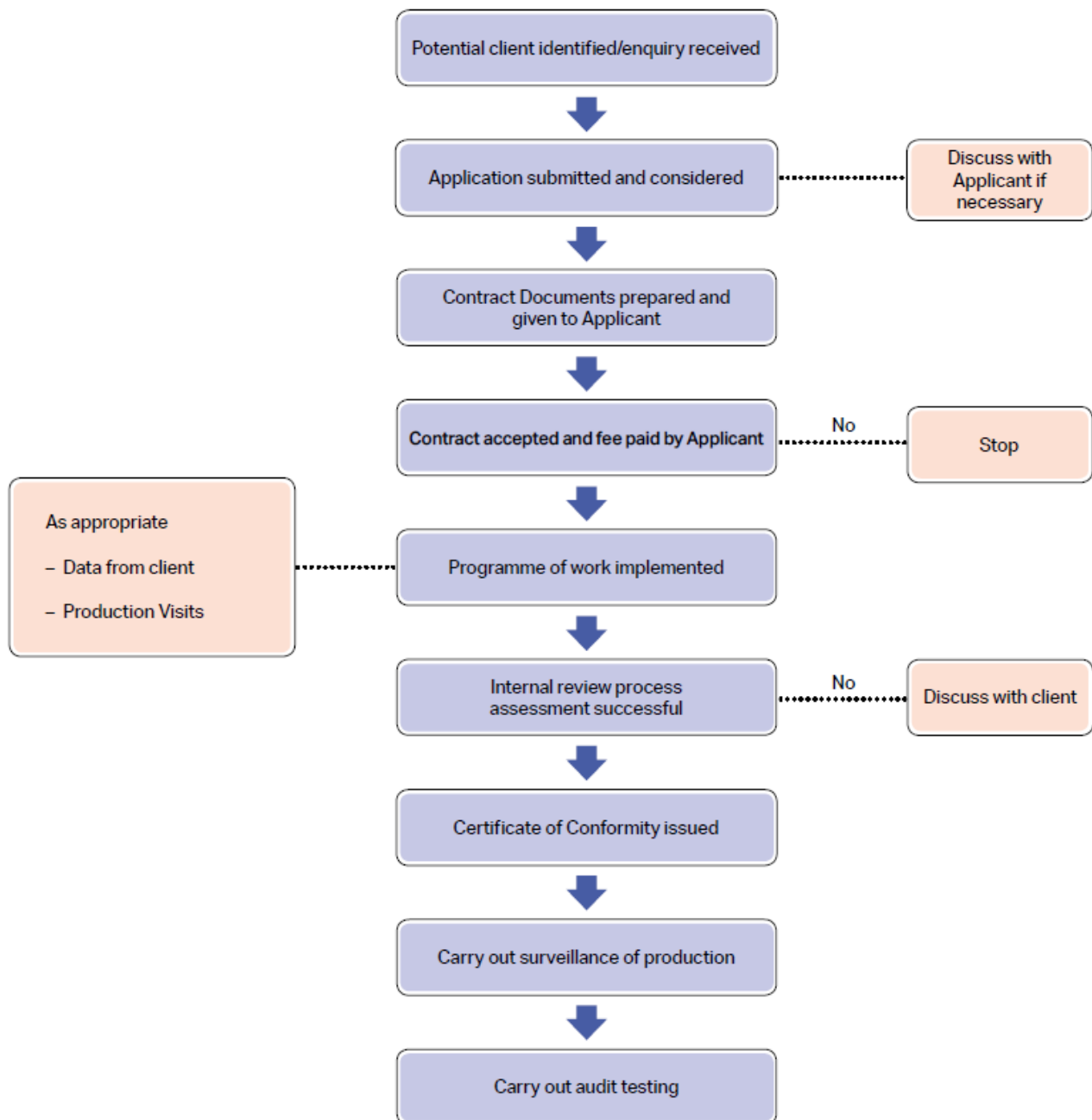
Should you need assistance at any time, please call or email our client services team on 01923 665300 who will be glad to help you.

4 APPLICATION FOR CERTIFICATE OF CONFORMITY FOR SECURED BY DESIGN (SBD)

This flow chart shows the BBA's assessment process from receipt of initial enquiry to issue of the Certificate of Conformity.

Please complete all applicable sections of the Application Form. If any questions do not apply to you, please mark them as "not applicable".

Completing the application form allows us to provide you with a valid contract. If you have any questions, please contact our client services team on 01923 665300 or client.services@bbacerts.co.uk who will be happy to assist.



Note that any information supplied by you will be treated in confidence and will not be disclosed other than as required: to any third-party that the BBA instructs or consults in connection with your application; under statute; or by English law.