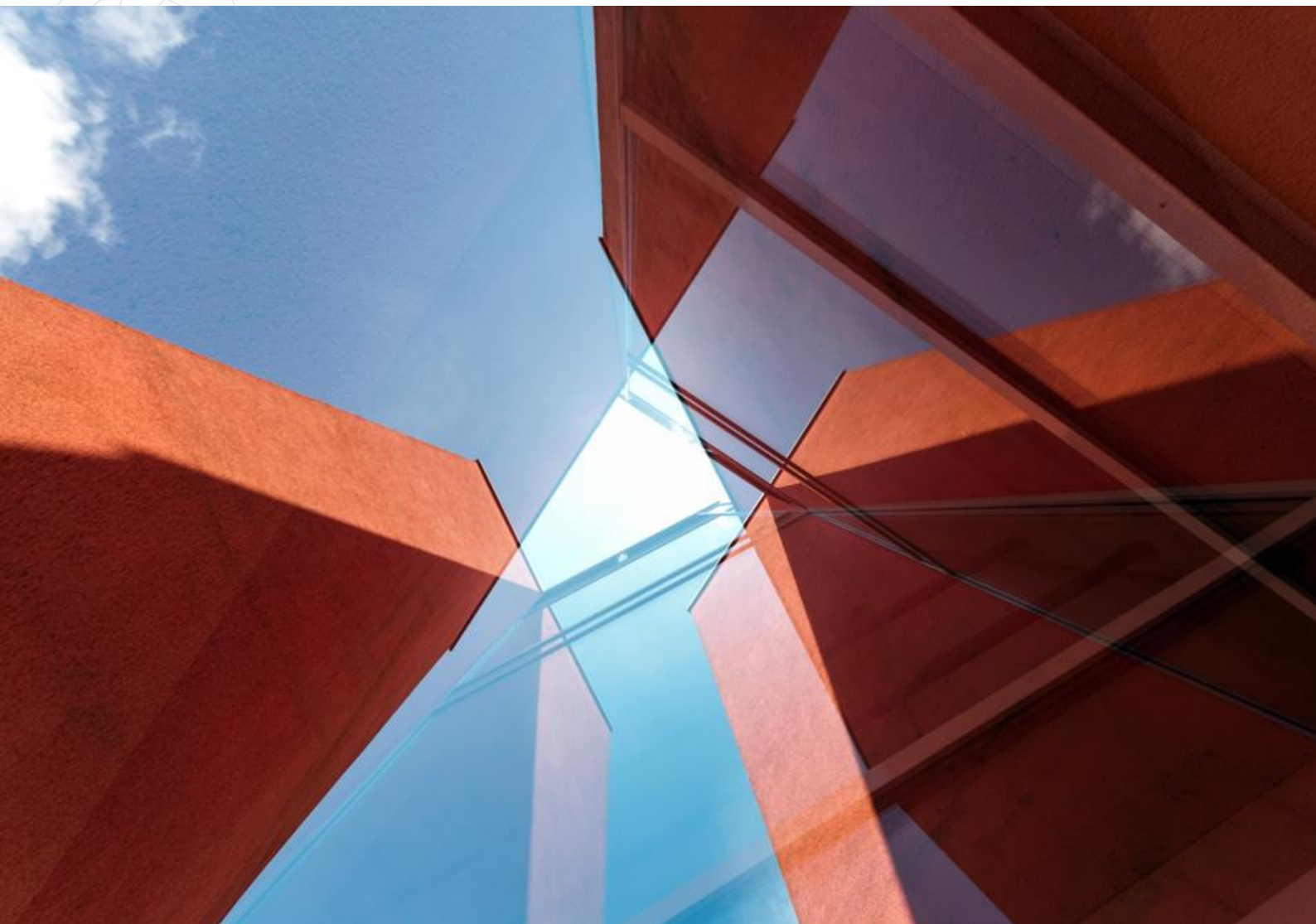




SCHEME REQUIREMENTS FOR THE BBA AGRÉMENT
CERTIFICATE SCHEME UNDER ISO/IEC 17020:2012
(30-01-01) Iss 1



Note: This is a BBA document and should only be used in its entirety. Use of a part of the document could be misleading.

Contents

1.0	INTRODUCTION	3
2.0	DEFINITIONS	3
3.0	SCOPE	4
4.0	THE BBA AGRÉMENT CERTIFICATE PROCESS	4
5.0	APPLICATIONS TO JOIN THE SCHEME	5
5.1	<i>Application</i>	5
5.2	<i>Application review</i>	5
5.3	<i>Contract</i>	5
6.0	GENERAL REQUIREMENTS FOR BBA AGRÉMENT ASSESSMENT	5
6.1	<i>General requirements</i>	5
6.2	<i>Key factors</i>	6
6.3	<i>Examples of document types used for assessments</i>	6
7.0	ASSESSMENT STAGES	6
8.0	REVIEW AND CERTIFICATE DECISION	7
9.0	CERTIFICATE ISSUE	7
10.0	MAINTENANCE OF THE BBA AGRÉMENT CERTIFICATE AND LISTING	8
11.0	REPRODUCTION CERTIFICATES	9
12.0	AGRÉMENT CERTIFICATE MARKING AND LABELLING	9
13.0	DEALING WITH NON-COMPLIANCE	10
14.0	CHANGES TO THE SCHEME	10
15.0	OTHER SCHEME CONSIDERATIONS	10
15.1	<i>Confidentiality</i>	10
15.2	<i>Impartiality</i>	11
15.3	<i>Other conditions</i>	11
	APPENDIX A: EXAMPLES OF PRODUCTS WITHIN PRODUCT GROUPS	12

1.0 INTRODUCTION

The BBA Agrément Scheme exists to provide fitness-for-purpose assessments for construction products and systems. The assessment activities undertaken by the BBA under this scheme are coordinated by the Product Approvals and Certification Department.

The requirements in this Scheme Manual are supported by BBA internal policies, procedures and templates.

The BBA is UKAS-accredited Product Certification Body (No 0113) to ISO/IEC 17065, Testing Laboratory (No 0357) to ISO/IEC 17025, Inspection Body (No 4345) to ISO/IEC 17020, and Management Systems Certification Body (No 0113) to ISO/IEC 17021. The BBA Agrément Certificate Scheme is operated under accreditation to ISO/IEC 17020 as an Inspection activity.

The Scheme also includes additional requirements that are not covered by UKAS accreditation; these elements are identified in this document, and in any issued Certificate.

2.0 DEFINITIONS

Agrément Certificate	A Certificate issued by the BBA to demonstrate that the fitness-for-purpose of a construction product or system has been assessed.
BBA	British Board of Agrément
Certificate	A BBA Agrément Certificate
Scheme	The BBA Agrément Certificate Scheme
Scheme Manual	This document; an overview of the Scheme. The document provides specific rules and procedures which apply to the construction products covered by the Scheme.
ISO/IEC 17020	Conformity assessment - Requirements for the operation of various types of bodies performing inspection
Inspection	Within ISO/IEC 17020, inspection is defined as: <i>'examination of a product, process, service, or installation or their design and determination of its conformity with specific requirements or, on the basis of professional judgment, with general requirements'</i> . An Agrément assessment includes examination of construction products / systems and processes supporting the production and use of these.
Applicant / Client	The company making an application for assessment of a product or system under the BBA Agrément Certificate scheme.
Product/ Component	An article/ item/ component or substance that is manufactured and placed on the market for an intended use
System / Kit	A collection of elements/ components that are organised, manufactured and assembled into a single group placed on the market with an intended purpose and for a specific application

3.0 SCOPE

The BBA Agrément Certificate scheme includes assessment of construction products and systems in the following product areas. More detailed product information is provided in Appendix A.

1. Building systems and kits
 2. Ceiling products
 3. Concrete and plaster products
 4. Heating and ventilation products and systems
 5. Finishes
 6. Floor products
 7. Highways works, products and systems
 8. Jointing products, components and materials
 9. Masonry products
 10. Roof and roofing products and systems
 11. Draining and plumbing products and systems
 12. Wall and cladding products and systems
 13. Window, door and opening products and systems
- No assessment under the Scheme will be accepted for products falling outside of these product definitions. If any additional product areas are needed, an application to extend the scope will be submitted to UKAS, or assessment may be undertaken without UKAS accreditation, with the agreement of the Applicant.

4.0 THE BBA AGRÉMENT CERTIFICATE PROCESS

- **Application** – The Client completes the application form available on the website, providing the information required for the BBA to carry out an application review. If the form contains insufficient information, the Client will be contacted for additional information. See Section 5.
- **Application Review** – The application is reviewed to establish that the requirements of the Client are clear, the information about the product or system is sufficient, and that the BBA has the competence and capacity to carry out the work. See Section 5.
- **Specification** - For each individual assessment, the BBA details the scope and methodology, including requirements for tests results, data and other information. This scoping is carried out with the consideration of the product or system characteristics and intended use(s). A project plan is prepared, resources are allocated, and information required for the assessment is requested and obtained. See section 6.
- **Assessment** – The assessment is carried out, including testing, assessment of third-party test reports, calculations and data, review of product information including technical, marketing and installation, inspection of manufacturing locations and/or sites, as required by the technical specifications. A report is produced to summarise the evaluation against requirements, and a recommendation is made on the product or system's fitness for purpose for its intended use. See Section 7.
- **Review and Decision** – The assessment, report and recommendations are reviewed and approved. A decision to issue a Certificate is made by an Authorised Signatory on the basis of the assessment activities carried out. If the product is deemed not to be fit for purpose, the BBA will inform the Client. See Section 8.
- **Certificate** – Issuing of an Inspection Certificate to confirm that the requirements of the Scheme have been met, and to confirm the outcome of the Assessment, including key factors assessed. See Section 9.
- **Maintenance and Listing of the Certificate** – a Certificate issued under ISO/IEC 17020 is valid at its date of issue, and therefore does not have a validity period. The BBA Agrément Certificate

scheme has continuing requirements for the certificate to remain on the BBA database, which include surveillance visits to production locations, and a periodic inspection job to review the information in the issued Certificate. See Section 10.

5.0 APPLICATIONS TO JOIN THE SCHEME

5.1 Application

- For clients wishing to apply for BBA Agrément Certificate Scheme there is an application form available on the BBA website.
- Applications received via other routes of communication, such as email, are also acceptable provided that all required information is obtained.
- Required information includes, among others:
 - Applicant details
 - Product / system specification, range, use, performance claims, CE/UKCA marking
 - Information on existing test reports / calculations / data
 - Manufacturing locations
- Information requested in the application form may vary from time to time at the BBA's discretion but is intended to include all information necessary to the review and preparation of a contract for assessment.
- If additional information is required, the BBA will contact the Applicant to request this.

5.2 Application review

- An application review is carried out to confirm that:
 - There is sufficient information to conduct the assessment activities and establish an understanding with the Applicant on the scope of products under assessment and their intended use
 - The BBA has the capacity and competence to conduct the assessment activities.
- In the case where the BBA has no prior experience of assessing a product / system of that specific type or application, a documented review will be carried out to confirm that the BBA has the capacity and competency to conduct the certification activities.
- If the BBA does not have the capacity and competence to conduct the assessment activities, the application will be declined, and the Applicant will be informed.
- The BBA has the right to decline an application for any reason, including but not limited to past history with the Applicant, such as non-payment of fees.

5.3 Contract

- The Certificate Contract (comprising a quotation and a set of terms and conditions) forms a legally enforceable agreement with the Applicant.

6.0 GENERAL REQUIREMENTS FOR BBA AGRÉMENT ASSESSMENT

6.1 General requirements

The aim of the BBA Agrément Certificate Scheme is to evaluate a construction product or system against an appropriate specification of requirements, to make a professional judgement that the product or system is fit for its intended purpose. To do this, the product or system is assessed against a number of key factors, and reference is made to a number of document types. Not all key factors will be applicable to an individual product or system, and there could be supplementary information provided in addition to the key factors. Not all document types will be relevant to an individual product or system, and there may be additional documents used if these contain requirements relevant to a product type.

The specific key factors and documents are dependent on the characteristics and intended use of the product or system under assessment, and will be defined at the beginning of the job; the specification may be amended during the job on the basis of information received, if this is necessary to complete the assessment. Should the specification be amended, the Client will be kept informed.

6.2 Key factors

1. Mechanical resistance and stability
2. Safety in case of fire
3. Hygiene, health and the environment
4. Safety and accessibility in use
5. Protection against noise
6. Energy economy and heat retention
7. Sustainable use of natural resources
8. Durability
9. Design, Installation, workmanship and maintenance

Each key factor will be considered for the product or system under assessment, and its intended use(s). A specification of requirements will be established so that the appropriate tests, investigations and information are included in the job.

6.3 Examples of document types used for assessments

- The national Building Regulations (England, Wales, Scotland and Northern Ireland)
- The guidance documents supporting the national Building Regulations
- Other relevant Regulations and Standards, such as the Construction (Design and Management) Regulations, The Electrical Equipment (Safety) Regulations, etc
- Construction Products (Amendment etc.) (EU Exit) Regulations
- EU Harmonised Standards relevant to the product type
- UK Designated Standards relevant to the product type
- Other British, European or International Standards, relevant to the product type
- NHBC Technical Standards and similar
- Other industry or product standards, codes and guides relevant to the product type.

All documents referred to will be widely used, reflect well-established consensus and/or have been prepared in consultation with a wide range of interested parties.

7.0 ASSESSMENT STAGES

1. Detailed assessment specification is produced (by product type and intended use)
2. Information is requested from the Client, such as these:
 - a. Test data
 - b. Calculations or other data
 - c. Technical documentation
 - d. Installation manuals
 - e. Marketing literature
 - f. Declaration of Performance (if applicable)
 - g. Production information based on a template Quality Plan provided by the BBA
 - h. Samples for testing

3. When all information has been received by the BBA, the BBA will carry out the following, as required for the job.
 - a. Evaluation of test data, calculations and other data
 - b. Evaluation of factory production information and the Draft Quality Plan
 - c. Evaluation of technical and other documentation to judge that it is acceptable, adequate and consistent
 - d. Assessment of the product or system for the nine key factors
 - e. Setting up factory audit(s) and site visit(s) as required
 - f. Carrying out factory visits to confirm that the processes, testing and controls used are consistent with what is provided in the Quality Plan, that the FPC is appropriate to the product and to give confidence that the product as assessed is representative of ongoing production
 - g. Carrying out testing at the BBA, or commissioning tests at a sub-contracted laboratory or location (if applicable)
 - h. Using professional judgement to assess fitness for intended purpose
 - i. Completing an Evaluation Report (Inspection Report) which includes information from the assessment, including details on acceptance of test results, decisions or judgements made, and information about factory or site visits.
 - j. Drafting a Certificate (Inspection Certificate)
 - k. Providing a recommendation for the statement on the product's fitness for its intended use, if this is supported by the assessment
4. Throughout this process, the Client will be informed of progress, and will be contacted if there is additional information required, or if queries arise.

Stages may progress concurrently and may progress not in this order.

8.0 REVIEW AND CERTIFICATE DECISION

1. The technical file for the assessment is reviewed; conformity to scheme processes and requirements are confirmed.
2. The recommendation is considered, and a decision on awarding a BBA Agrément Certificate is made.
3. If the assessment does not conclude with a favourable evaluation of fitness for purpose, the Client will be informed, and the outcome provided in writing, in the form of a report.
4. If a Client wishes to appeal against a Certificate decision, there is information on the BBA website about the process for doing this.

9.0 CERTIFICATE ISSUE

1. The content of the Certificate is reviewed as applicable by:
 - a. PAC managers and technical experts
 - b. BBA authorised signatories
 - c. External reviewers, if a need for this has been identified
 - d. The Client, to check for factual accuracy.

Note that external input will be considered, but will only be implemented if the BBA judges it to improve the draft, and it will not influence the outcome of the assessment, which remains the responsibility of the BBA.
2. When finalised, the Certificate is issued to the Client, and uploaded to the BBA website.
3. A BBA Agrément Certificate issued under ISO/IEC 17020 will include:
 - a. Identification of the BBA as the issuing Inspection Body

- b. Unique identification
- c. Date of issue
- d. Identification and description of the item(s) inspected
- e. A statement of fitness for purpose and conformity to scheme requirements
- f. A section for relevant Building Regulation clauses, and the judgements made in terms of the product or system satisfying, or contributing to satisfying, the Regulations. The Building Regulations of England, Wales, Scotland and Northern Ireland are included.
- g. A section for each of the key factors identified in Section 6.2, describing the information and data that was assessed, the outcome, and any assumptions or limitations associated with the data.
- h. The Certificate will not include all the details of the assessment activities. These are reflected in full in the Evaluation Report (Inspection Report) which is held by the BBA.
- i. A Supplementary Information section containing information that is covered by a Scheme requirement, but is outside the scope of UKAS accreditation. Among other factors, this may include: additional information on use, application and installation that are not covered in the key factors; information or guidance that is considered important but did not form part of the inspection activity, such as generic guidance and requirements, or book values used; information on other certifications held and verified, such as ISO 9001; environmental information that has been verified but is not part of the assessment specification.
- j. Elements of the Certificate not issued under accreditation are marked with a † symbol.

10.0 MAINTENANCE OF THE BBA AGRÉMENT CERTIFICATE AND LISTING

- A listing of current BBA Agrément Certificates is maintained on the BBA website. A Certificate issued under ISO/IEC 17020 is valid at its date of issue, and therefore does not have a validity period. It will be maintained on the BBA website for as long as the additional Scheme requirements below are met.
- As part of the maintenance arrangements for the BBA Agrément Certificate, the BBA will undertake surveillance/regular inspection of factory production control at the manufacturing locations. The initial factory visits during the assessment have established that there is confidence that ongoing production will be consistent with the product as assessed and described in the BBA Agrément Certificate. Surveillance visits after Certificate issue look for evidence that the production since Certificate issue or since the last surveillance visit has continued to follow the Quality Plan processes, and confidence that subsequent production will continue to do so. Should the BBA conclude that the FPC is not judged to be consistent and adequate, the Certificate will be removed from the BBA website. This aspect of the scheme falls outside of the accredited process.
- Any deviations from the Quality Plan identified by the Client, or by the BBA Assessor at audit will be assessed by the BBA; if judged to be technically significant, a new inspection job will be raised and a new Certificate issued if the assessment is successful. This Certificate will replace the previous version on the website.
- In all cases, before the end of three years from issue, a job will be raised to review existing content of the Certificate, and to assess any new information. Where appropriate, a new Certificate will be issued, which will be uniquely identified. This provides reassurance that the latest Inspection Certificate for the product was issued at most within the last four years, and that any conclusions and existing data are deemed to remain valid. This review and reissue is required as part of the Scheme if the Client wishes a Certificate to remain on the BBA website and wishes to continue to use the BBA logo.
- The above obligations are in addition to other ongoing obligations given in the Certificate Terms and Conditions.

- The Certificate Holder must be the same legal entity as the original Applicant. In the case where a product / system is acquired by a different legal entity, a new Inspection job and assessment will be carried out; the previous Certificate will be removed from the BBA listing, and a new one will be issued and listed.
- If there is a product change, regulatory change, unresolved complaint or other non-conformity to the scheme requirements (see Section 13.0), the Certificate will, at the BBA's discretion, be taken down from the website unless and until the non-conformity is addressed. At this stage, the Certificate is considered *Suspended*. If it appears that any of the above changes cannot be resolved to the satisfaction of the BBA, the Certificate will be considered *Withdrawn*. Any change in status, including the reasons, will be communicated to the Certificate Holder. While a Certificate is in a Suspended or Withdrawn status, the licence to use the BBA logo and use the Certificate will be revoked. Once Withdrawn, the Certificate will be permanently removed from the website listing and cannot be reinstated. For the avoidance of doubt, Suspended and Withdrawn are BBA terms, rather than ISO/IEC 17020 terms. A Certificate Holder shall not display or refer to an Agrément Certificate, nor use the associated logo, while the Certificate is in either the Suspended or Withdrawn status. A Certificate Holder shall not display or refer to an Agrément Certificate that has been superseded by a later issue.

11.0 REPRODUCTION CERTIFICATES

Reproduction Certificates are white-label Certificates where another supplier rebrands a certified product with their own name, but the product is technically identical and produced at the same locations according to the same FPC regime.

The following terms specific to Reproduction Certificates apply.

1. To obtain a Reproduction Certificate, an application should be made to the BBA.
2. The Applicant must be able to provide written authorisation from the holder of the original BBA Agrément Certificate (the Master) to hold a Reproduction. The original Certificate holder gives permission for the assessment results from their assessment to be applied to the Reproduction Certificate, but does not (unless specified) give access to data or information held in the technical records by the BBA.
3. At the time of issue of a Reproduction Certificate, the BBA shall satisfy itself that the content of the Master Certificate is current and valid, and that the Reproduction Certificate holder is acting in accordance with the Scheme requirements.
4. Reproduction Certificates are hosted on the BBA website, and are not identified as Reproductions.
5. Should the Master Certificate be taken down from the website for any reason, the Reproduction Certificate also will be.
6. Should the original Certificate Holder withdraw authorisation for the use of their assessment results, the Reproduction Certificate will be taken down from the website.
7. It is a Scheme requirement that when the Master Certificate is reviewed and reissued, the Reproduction Certificate shall also be.
8. Surveillance activity will be undertaken using a Reproduction Quality Plan, to ensure that traceability of product is maintained and the terms of the Scheme are being upheld by the Reproduction Certificate holder.

12.0 AGRÉMENT CERTIFICATE MARKING AND LABELLING

- The outcome of the assessment job is the Certificate.
- Ongoing compliance with the BBA Agrément Scheme requirements confers a non-exclusive right to the Certificate holders to use a specific logo, including the relevant Certificate number. In the

event that the status of a Certificate changes (see section 10.0) the licence to use the logo shall be revoked.

- Rules for use of the logo are provided in the BBA Brand Guidelines document, issued to each Certificate holder at the issue of each Certificate.
- The BBA will investigate misuse of logo or other misrepresentation of BBA approval.

13.0 DEALING WITH NON-COMPLIANCE

- Any cases of non-compliance with this Scheme Manual and other documented procedures will be investigated and actioned as appropriate. Full records will be maintained of all such investigations.
- Non-conformities identified during a production visit or a site visit (such as factory production controls being found to deviate from information provided in the Quality Plan, or installation) will be documented as part of the job records. These will be recorded in the internal inspection report held by the BBA.
- A non-conformity identified during the initial production visit or an installation visit requires corrective action to be taken and evidenced to the satisfaction of the BBA within 30 days of the visit to enable the visit to be considered satisfactory. If the non-conformity cannot be satisfactorily addressed within this time period, the BBA will consider whether the plan to address the non-conformity is satisfactory, or whether a repeat visit is required at cost to the Client.
- Should a non-conformity be identified that would prevent the BBA from issuing an Inspection Certificate at the end of the assessment (such as a product not meeting a required criterion), the Client will be informed and either: a report will be issued and the job will close; or additional or repeat assessment will be specified, at cost to the client.
- Non-conformities identified during the assessment process will be recorded in the internal Inspection report.
- Valid complaints or concerns about BBA or BBA Certificate holders will be investigated and documented.

14.0 CHANGES TO THE SCHEME

At the BBA's discretion, changes to the Scheme may be made, including but not limited to changes to the Technical Requirements, Certificate content, assessment methodologies, and terms and conditions. All such changes will be authorised as required by BBA internal procedures and documented accordingly.

15.0 OTHER SCHEME CONSIDERATIONS

15.1 Confidentiality

All material received from the Client in any form, from initial enquiry through to ongoing maintenance of Certificates, is treated as confidential and proprietary. The Certificate Terms and Conditions outline the information that the BBA will have in the public domain, including the Certificate itself. Any information other than this will be shared only with explicit permission from the Certificate holder, unless it is required to be released for statutory, regulatory or judicial reasons. If this is the case, the Certificate Holder will be informed of the information released, unless this is not permitted.

In cases where the Certificate Holder uses a third-party manufacturer, the Certificate Holder does not have an automatic right to access information about the production materials, processes, testing and control. This remains confidential between the BBA and the manufacturer, unless the

manufacturer agrees that the Certificate Holder may have access. Production information will only be shared with the contacts named on the Quality Plan for production.

All BBA staff and any third party used during assessments agree to these conditions of confidentiality.

15.2 *Impartiality*

All conformity assessment activities will be undertaken by the BBA with impartiality. This means that assessment requirements and decisions are consistent between Clients for the same type of product and application, and that no Client will be given commercial precedence over another. If a new service is offered, it will be available to all Clients, and there are no pre-requisites to apply for Certification.

15.3 *Other conditions*

This document should be considered in combination with the Terms and Conditions given in the contract, and the Conditions of Certificate on the Certificate itself.

APPENDIX A: EXAMPLES OF PRODUCTS WITHIN PRODUCT GROUPS

EXAMPLES OF PRODUCTS WITHIN PRODUCT GROUPS

Product	
Technical Specification 001: Building Systems and Kits, including:	
Building system – Non-residential Building System - Relocatable Building System – Residential Building System – Structural Insulated Panels Conservatory	Conservatory Roof Frame or framing system Permanent Formwork Storage System Timber
Technical Specification 002: Ceiling Products, including:	
Ceiling Insulation Insulated Ceiling Lining	Suspended Ceiling
Technical Specification 003: Concrete and Plaster Products, including:	
Admixtures (Water Resisting Admixture) Aggregate Arch Frame Bar or re-bar Bead (render) Concrete Reinforcement Concrete Repair Corrosion Inhibitor Coupling Fibre Formwork Liner Ground Granulated Blast Furnace Slag	Lathing Mortar Plaster Polymer Binder Post Tensioning Kits Pozzolana Ready Mixed High-Performance Concrete Render Sacrificial Anode System Wash Water Solution (concrete) Water Resisting Admixture Water Resisting Concrete (Type B)
Technical Specification 004: Heating and Ventilation Products and Systems, including:	
Acoustic Ducting Material Acoustic Wall Ventilator Background Ventilation Biomass Boiler Cavity Wall Ventilator Chimney Diffuser Ducting Floor Heating Flue Liner Flue Pipe Heat pumps (air-source and ground-source)	Heat Recovery Ventilator Mechanical Ventilator Passive Ventilation Photovoltaic Panels and Systems Photovoltaic - Bespoke Building-Integrated Ridge Ventilator Roof Space Ventilator Soffit Ventilator Solar Thermal Panel Suspended Floor Ventilator Wind Turbine
Technical Specification 005: Finishes, including:	
Anti-carbonation Paint Anti-corrosive Paint Anti-graffiti Paint Cladding Overcoating System Flame Retardant Floor Coating Fungicidal Paint Industrially Applied Coating	Masonry Paint Plastic Rendering Stabilising Solution Tile Substrate Timber Paint Water Repellent Wood Preservative Wood Stain

Technical Specification 006: Floor Products, including:	
Clay Heave Protection Concrete Floor Topping Damp-proof Membrane Floating Floor Floor Beam Floor Decking Floor Insulation Flooring (In-situ) Flooring Sheet Flooring Sheet (acoustic) Flooring Sheet (antistatic) Flooring Sheet (safety)	Flooring (Structural) Flooring Tile (polymeric) Flooring Tile (textile) Gas Control Layer Infill Block Internal Drainage Membrane (floor) Pile Platform Floor Screed Sheet Piling Soil Stabilisation Underlay
Technical Specification 007: Highway Works, Products and Systems including bridges, including:	
Anti-corrosive Metallic Coating / Paint Asphalt Surface Treatment Binder/Roadbase Bituminous Mixture Bituminous Surface Course Bridge Deck Waterproofing Bridge Parapet Anchorage Crack sealing system - Fill and Overband Crack Sealing System - Inlaid Crack Sealing System - Overbanding Culvert Fin Drain Footway/Footpath Surface Treatment Gabion (earthworks) Grouted Macadam Gully and Pipe Junction High Friction Surface Interlayer Reinforcement System Kerbing Key Hole reinstatement Bonding Compound Lap and Joint (reinforcement)	Localised Surface Repair System Manhole Reinstatement System Modified Bitumen - Emulsions Modified Bitumen - Hot Asphalt Modifier Non-Man Entry Inspection Chamber Patch repair product Permanent Cold-lay Basecourse Permanent Cold-lay Material Permanent Cold-lay Wearing Course Pervious Pavement Pipe for Drainage and Service Duct Reinforced Earth Structure Resin Bound Aggregate Retaining Wall Soil Reinforcement Strengthened Embankment (earthworks) Structured Wall Pipe and Fitting Thin Surfacing
Technical Specification 008: Jointing Products, Components and Materials, including:	
Anchor Bolt Adhesive Balcony Connectors (inc. Insulated) Bolt Brick Slip Adhesive Concrete Fixings / Concrete Panel Connectors Extension Profile Insulation Retaining Clip Insulation Retaining Wall Tie Internal Trim Joist Hanger Joist Sealing Cap	Movement Joint (masonry) Nail Pipe Support Plasterboard Ceiling Fixing Roof Ridge, Hip and Verge Fixing Roof Sealant/Adhesive Screw Sealant Sealing Strip Timber Fastener Wall Tie
Technical Specification 009: Masonry Products, including:	
Architectural Cast Stone (non-loadbearing) Block paving	Building Block - Thermally insulating / Thin joint Mortar Joint Spacer

Building Block - Thermally insulating	Weep Hole
Technical Specification 010: Roof and Roofing Products and Systems, including:	
Asphalt Barge, Fascia, Soffit Board Blanking tape Built-up Metal Roofing Car Park Deck Waterproofing Coil Coating Decorative Chimney Dormer Flashing Guard Rail Insulated Roof Decking Profiled Sheet PVC-U Barge, Fascia, Soffit Board Roof Beam Roof Decking	Roof Insulation Roof Panel Fixing Kit Roof Tile Underlay Roof Walkway Roofing (installer) Roofing (liquid-applied) Roofing (roll form-bitumen) Roofing (roll form-miscellaneous) Roofing (roll form-polymeric) Roofing Sheet Roofing Slate Roofing Tile Rooflight Vapour Control Layer
Technical Specification 011: Drainage and Plumbing Products and Systems, including:	
Above Ground Drainage Component Air Admittance Valve Basement De-watering System Flood Protection Device Pipe Insulation Pipe Trace Heater Pressure Pipe Joint Pipe Fire Protection Sanitary Appliance	Service Box Service Duct Sewerage System Storage Tank Surface Water Drainage (including Gutter) Underground Drainage Underground Tank Unvented Hot Water Storage System Water Service
Technical Specification 012: Wall and Cladding Products and Systems, including:	
Airtightness membrane Beam Blown-in Cavity Wall Insulation Breather Membrane Built-in Cavity Wall Insulation Cavity Closer Cavity Spacer Cavity Tray Cladding Cladding Slate Coated coil metal - walling Composite Walling Coping Damp-proof Course (new) Damp-proof Course (remedial) External Drainage Membrane (wall) External Wall Insulation	Infill Wall Panel Injected Cavity Wall Insulation Injected Cavity Wall Stabilisation Insulated Wall Lining Internal Drainage Membrane (wall) Internal Wall Insulation System Lintel Partition Passive Fire Protection Sheet PVC-U Cladding Sheathing Tanking Timber Frame Insulation Vapour Control Layer Wall Wall Lining
Technical Specification 013: Window, Door and Opening Products and Systems, including:	
Door Door Fabricator Door Infill Panel Glazing Glazing Tape (enhanced resistance to intrusion)	Roof Window Roof Window (Light Tunnel) Superfabricator Window and door accessories Window Fabricator

Hardware Passive Fire / Smoke Seal	Window / Door System Supplier
---------------------------------------	-------------------------------

End